

Environmental issues in assistance program

From ICRC's mission



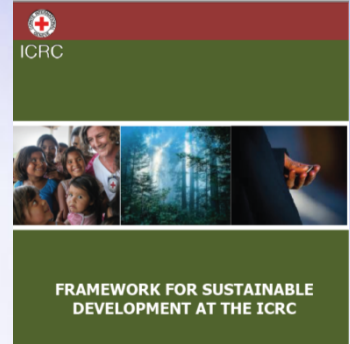
Activities to achieve this mission

Impact of these activities



What to do to address sustainable development issues

FRAMEWORK FOR SUSTAINABLE DEVELOPMENT AT THE ICRC



Environnemental dimension

Taking into account environmental issues when defining and implementing assistance programs



beneficiaries



environmental management at headquarters and in the field

support



Framework for environmental management in assistance programmes

International Committee of the Red Cross (ICRC),
Assistance Division, September 2009

Reducing the potential impact of environmental degradation and climate change when defining and implementing these assistance programmes is one of the seven objectives of the ICRC sustainable development framework.

Water and Habitat



Health

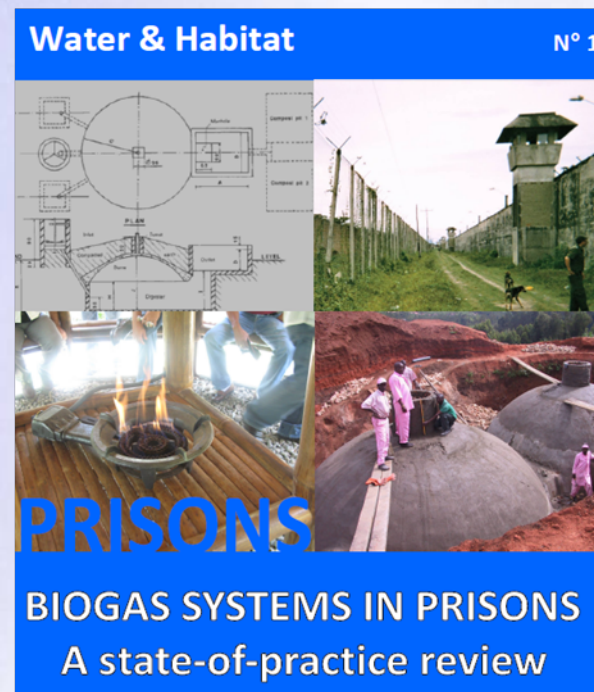
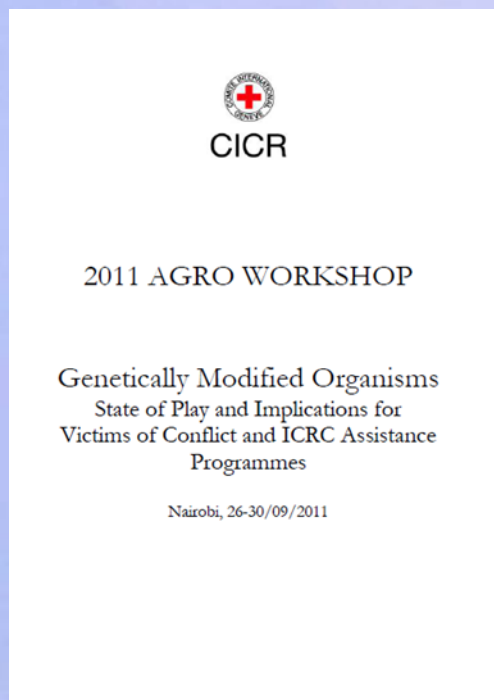


Economic Security



Best practice to follow...

some valuable initiatives have been undertaken to improve the environmental balance of our projects. The framework builds on past experiences and encourages delegations to systematically include environmental concerns within operational planning in all the different specialities of assistance programmes.



Biogaz systems set up by the CICR in Nepali, Rwandan and Philippine jails

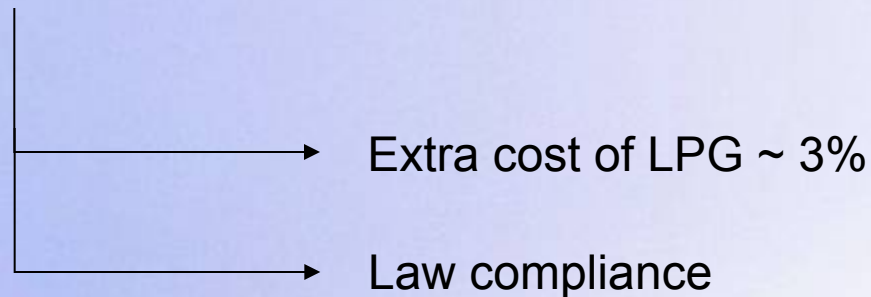
Additional costs but with overall improvement



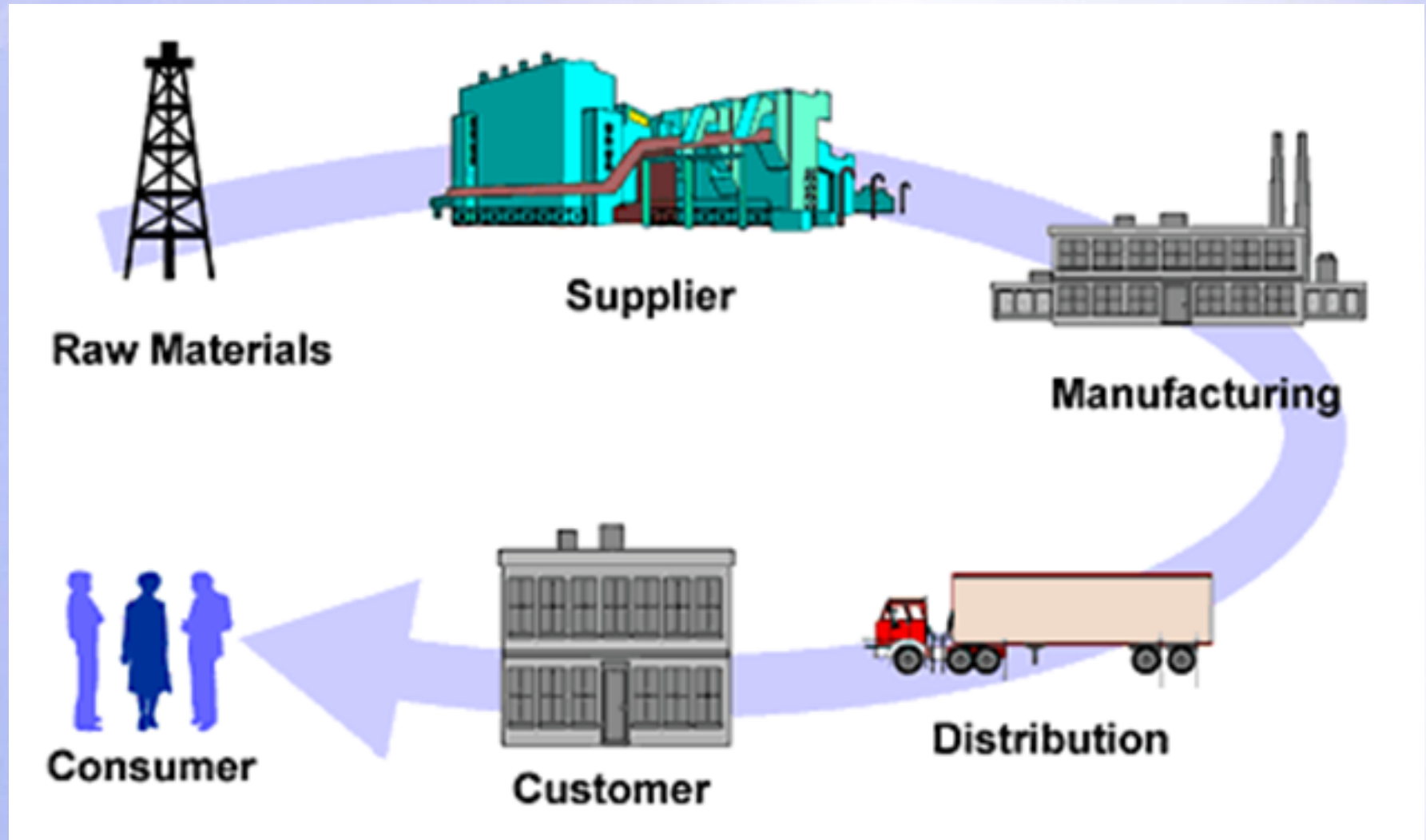
Environment	Renewable energy produced as a partial alternative to wood and oil.	✓
	Effluent used as fertilizer.	Partly
Social	Better conditions for those working in the kitchens (by reducing health risks).	✓
	Better management of human waste reduces health risks.	✓
Economy	Costs up to five times more than septic-tank systems.	X

Problematic in Detention

- Poor working conditions
- Insufficient funds
- “Clean Air Act” decree



One of the major activities to achieve this mission : The supply chain



Purchasing strategic orientation 2008-2016



Working conditions



Product quality



Child labour banning



Environmental protection

Guarantee the purchasing ethical & environmental responsibility

ICRC General Conditions on Purchasing

The seller must provide written confirmation accepting the ICRC's code of conduct for purchasing before any order can be approved.

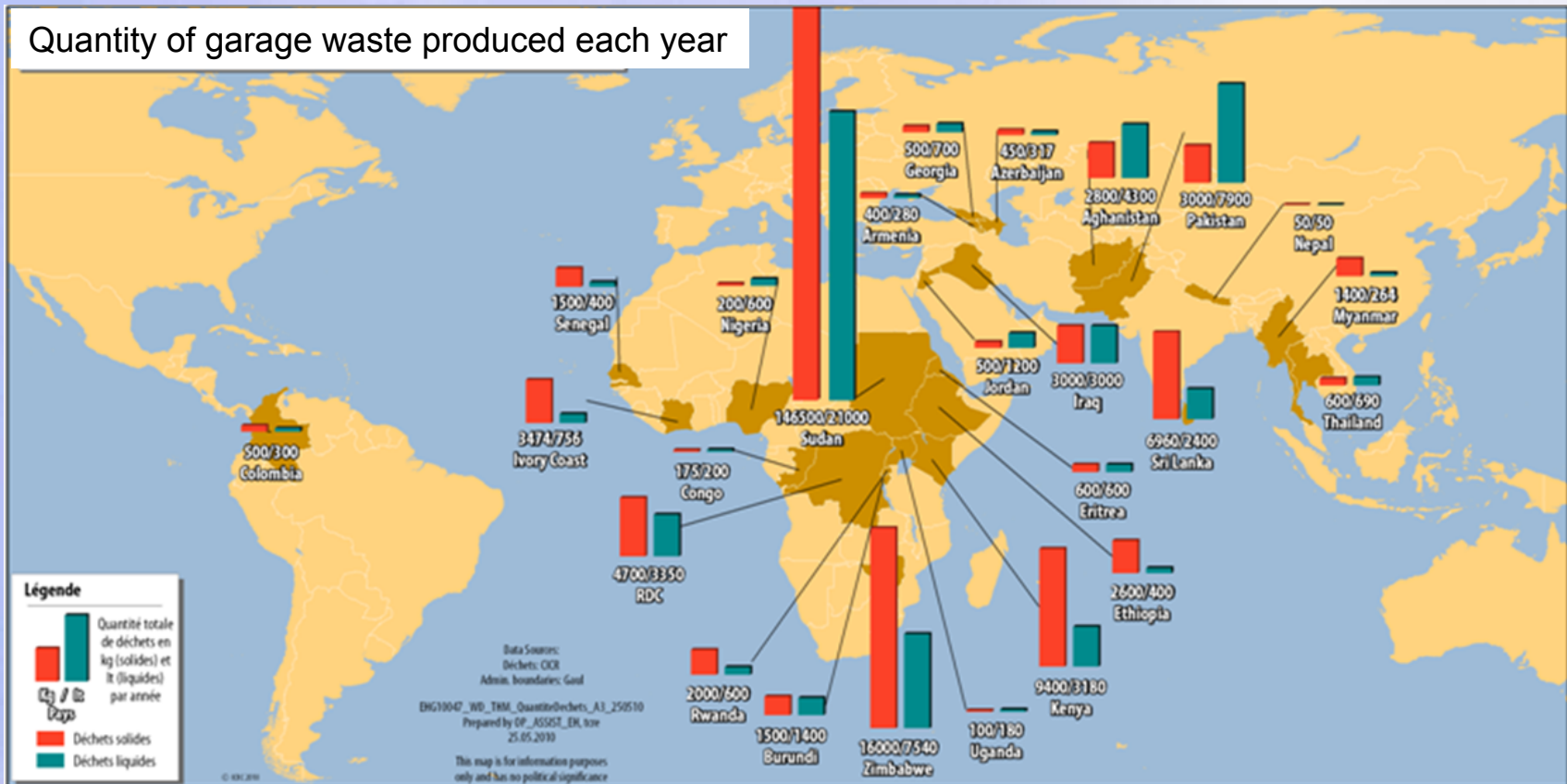
Management of hazardous waste in the delegations

Issues

By polluting the water table and releasing harmful smoke particles into the atmosphere, **we endanger human health and destroy fragile ecosystems.** The potential impact of this pollution can make itself felt in the short term and can also build up over several years.



Quantity of garbage waste produced each year



Assessment of the different existing process

WASTE MANAGEMENT AT THE DELEGATION

A survey was made to find out how waste is handled in Nairobi. The results are summarized in the table below.

Type of waste	1	2	3	4
Paper		x		
Batteries	x			
Electric and electronic devices	x			
Toner and printer cartridges	X			
Plastic		x		
Glass		x		
Aluminum		x		
Organic waste				x

1-Official recycling channel
2-Unofficial recycling channel
3- Stored
4-Not recycled.



Process for waste recycling ?



major impacts on the environment...?

Dashboard for delegations

Version française



Waste



Chemical substances



Energy



Office supplies



Water



Transport



Green Spaces



Products for cleaning

These should be used only for routine cleaning of the premises: often water and microfibre cloths are enough. For special cleaning needs or disinfection, precautions should be taken to keep the risks to health and the environment to a minimum.



Products used in garages

- Garages: working in workshops - basic principles
- Garages: handling of certain chemicals, and their emissions



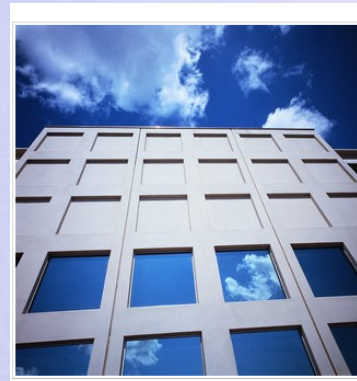
Buildings

Building maintenance: products used for minor maintenance and repairs



Refrigerant fluids

Many refrigerant fluids have been, or are about to be, banned, owing to their impact on the climate and destructive effects on the ozone layer. Therefore, before replacing equipment make sure it contains the least problematic substances – and ask yourself whether the appliance is in fact needed.



Products used for minor building maintenance

Painting and varnishing

Painting and varnishing jobs are associated with poisoning by dermatitis or respiratory problems.

☺ If possible choose water-based or acrylic paints and varnishes



Do not use paint containing lead.



Work in a well-ventilated area.



Use appropriate protective equipment (gloves and masks as used, and protective eyewear for longer jobs).

Working with glue



If there is a lot of gluing to be done preferably use hot-melt gun rather than polyurethane or two-component glues (epoxy)

Working with delegation

Summary of Social and environmental performance of each pilot

WASTE MANAGEMENT AT THE DELEGATION

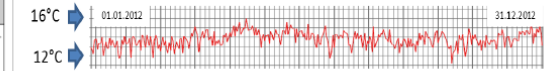
A survey was made to find out how waste is handled in Nairobi. The results are summarized in the table below.

Type of waste	1	2	3	4
Paper		x		
Batteries	x			
Electric and electronic devices	x			
Toner and printer cartridges	X			
Plastic		x		
Glass		x		
Aluminum		x		
Organic waste				x

1-Official recycling channel
2-Unofficial recycling channel
3- Stored
4-Not recycled.



Temperature has an impact on energy consumption and has to take into account. The climate in Bogota is moderate temperate, which varies very little. The average temperature ranges between 11 and 16°C.



From University of Dayton Climate Archive

THE PILOT PROJECT

The ICRC Bogota delegation has proven so far particularly creative in finding concrete solutions for an optimal use of energy and natural resources. The delegation was thus included in the pilot project to share its good practices as one of the most advanced delegations regarding environmental management issues.

WORKING GROUP



PROJECTS CURRENTLY UNDERWAY

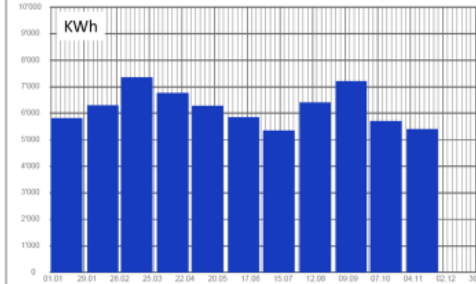
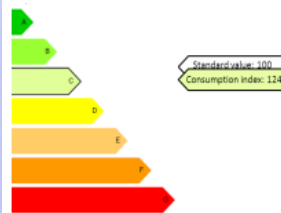
- All the materials are separated in the delegation and given to a recycling association that works with vulnerable people. The covers of the plastic bottles for example are separated and given to a foundation that collects funds by selling this material in order to help children with cancer.
- Change of all the bulbs in the delegation and ICRC houses for energy saving light bulbs
- Using biodegradable cups instead of disposable
- Water saving faucets in all the sinks of the delegation
- Awareness campaign to all the ICRC employees to avoid paper waste and the 3R concept (reduce, recycle, reuse)
- Replacing small plastic sugar bags by a recipient with sugar (to use with spoon)
- Using A4 paper made of the waste of sugar cane.

SUMMARY OF RESULTS OF ENVIRONMENTAL INDICATORS

E1: ENERGY

HOW IS THE ENERGY CERTIFICATE CALCULATED?

Energy certificate



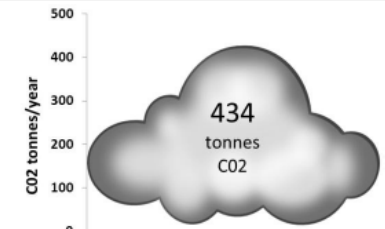
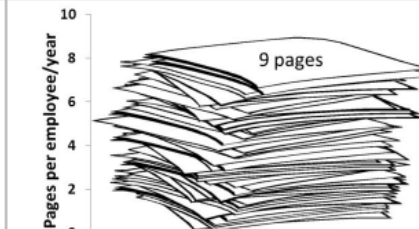
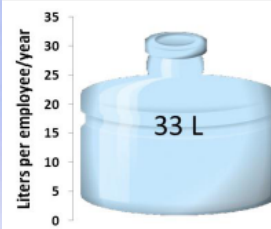
Gas
Fuel
Electricity

The various types of energy consumed (gas, fuel oil, electricity) are weighted by their primary energy factor and added to obtain total consumption, which is compared with the energy reference area. The result is used to calculate the Energy certificate¹.

E2: WATER CONSUMPTION

E3: PAPER CONSUMPTION

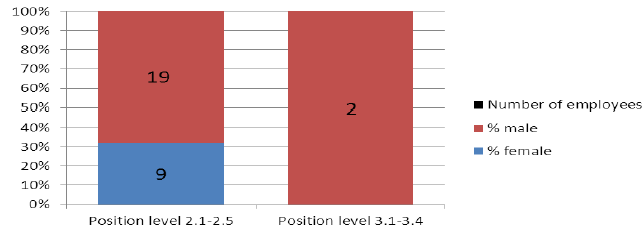
E4: CO2 FROM VEHICLES AND GENERATORS



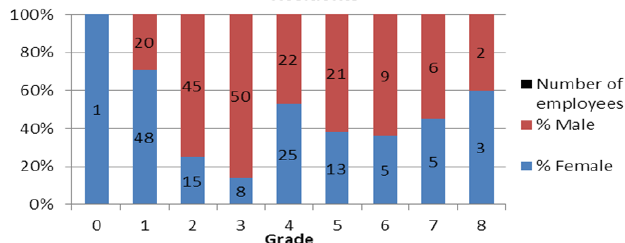
SUMMARY OF SOCIAL INDICATORS

S1 b: BREAKDOWN OF WOMEN BY POSITION

Mobiles



Residents



Sustainable development ... A balance to be struck

